

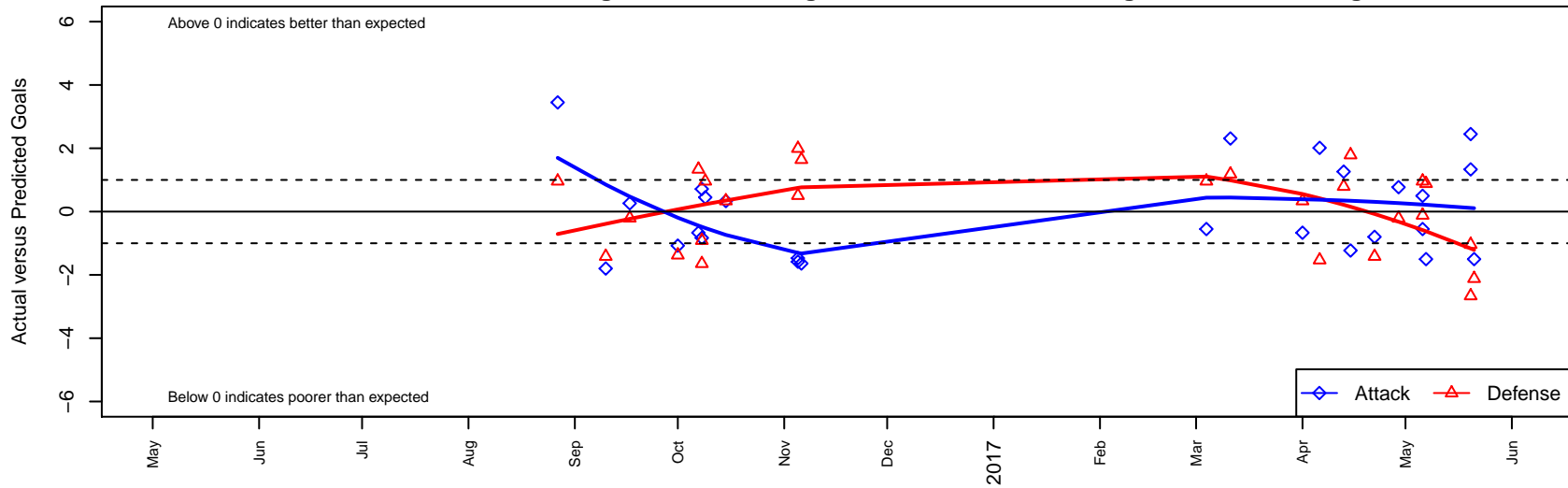
Idaho Rush Black B05

Idaho Rush Soccer
 Boise, ID
 B05 total strength=730
 attack=1.14 defense=0.54
 fall league = Idaho D3 U12 West U12
 spr league = Spr Idaho D3 U12 South

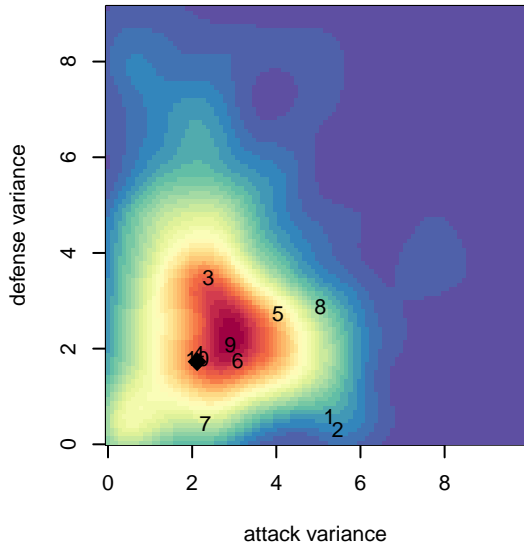
alt names used:
 IDAHO RUSH BLACK (2005) (ID)
 IDAHO RUSH BLACK (2005)
 IDAHO RUSHBLACK (2005)
 IDAHO RUSH BLACK (2005)
 IDAHO RUSH BLACK (2005) (ID)
 IDAHO RUSH BLACK (2005) (ID)

Venues played:
 2016 Idaho D3 U12 West U12
 2016 GEM State Challenge U12B Silver West l
 2016 FC Nova Fall Showcase U12
 2016 Spr Idaho D3 U12 South
 2016 Canyon Rim Classic U12 B American U1:
 2016 ID Directors Cup U12B Silver U12

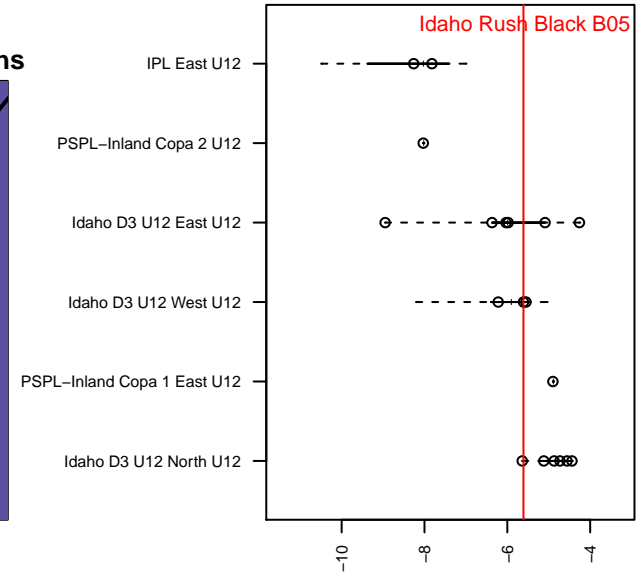
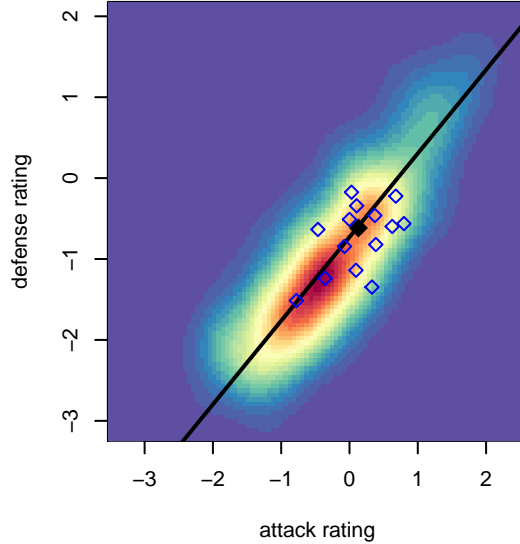
Idaho Rush Black B05
 Dots are actual minus expected GF (blue circles) and GA (red triangles).
 Blue line is smoothed change in attack strength. Red is smoothed change in defense strength.



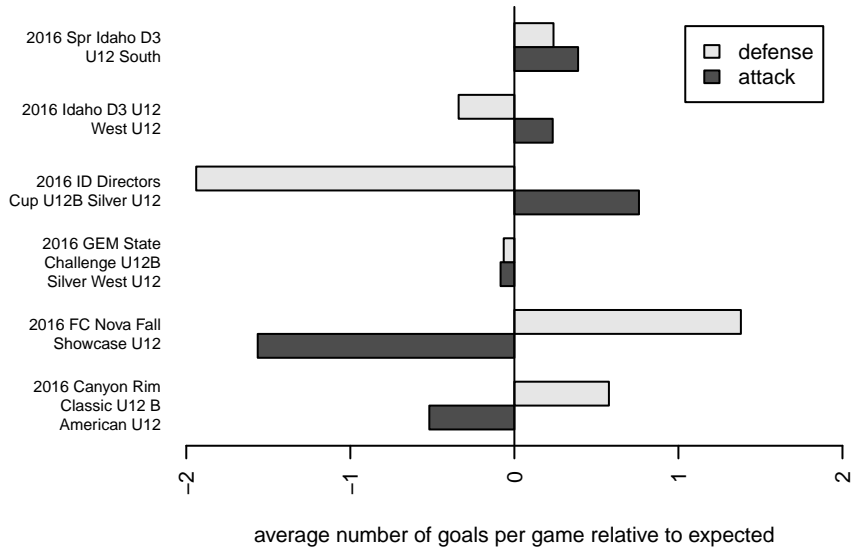
**attack and defense variance (black dot)
relative to other teams
and top 10 in region**



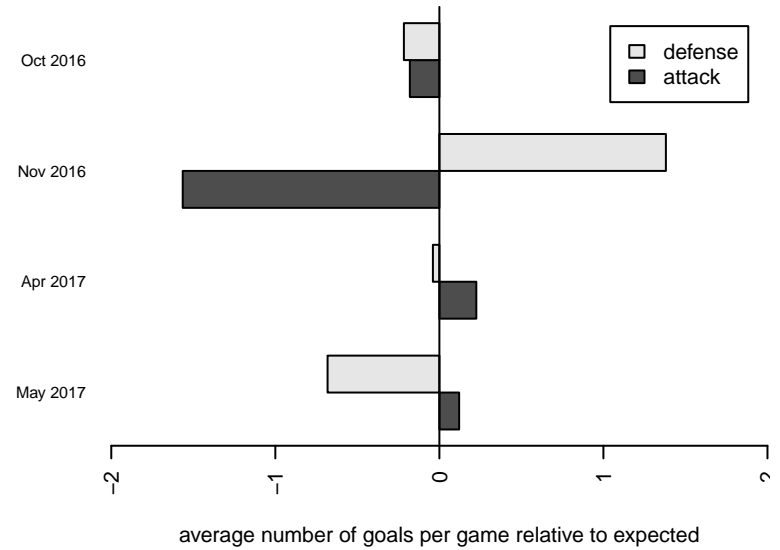
**attack and defense rating
relative to others at age
and all opponents in last 13 months**



Performance relative to 13 month average



Performance relative to 13 month average



| date | home | | away | | venue | pred.home | pred.away |
|-------------|-----------------------------------|---|-----------------------------------|---|--|------------------|------------------|
| 17-05-21 | Canyon Optimist Inferno B05 | 4 | Idaho Rush Black B05 | 0 | 2016 ID Directors Cup U12B Silver U12 | 1.88 | 1.50 |
| 17-05-20 | Idaho Rush Black B05 | 4 | Boise Nationals Timbers Green B05 | 4 | 2016 ID Directors Cup U12B Silver U12 | 2.67 | 1.34 |
| 17-05-20 | Idaho Rush Black B05 | 6 | Mountain Home SC B05 | 3 | 2016 ID Directors Cup U12B Silver U12 | 3.55 | 1.96 |
| 17-05-07 | Idaho Rush Black B05 | 0 | Canyon Optimist Inferno B05 | 1 | 2016 Canyon Rim Classic U12 B American U | 1.50 | 1.88 |
| 17-05-06 | Idaho Rush Black B05 | 2 | Canyon Optimist Inferno B05 | 2 | 2016 Canyon Rim Classic U12 B American U | 1.50 | 1.88 |
| 17-05-06 | Idaho Rush Black B05 | 3 | Mountain Home SC B05 | 1 | 2016 Canyon Rim Classic U12 B American U | 3.55 | 1.96 |
| 17-04-29 | Sun Valley Blue B05 | 2 | Idaho Rush Black B05 | 2 | 2016 Spr Idaho D3 U12 South | 1.79 | 1.23 |
| 17-04-22 | Idaho Arsenal United B05 | 4 | Idaho Rush Black B05 | 1 | 2016 Spr Idaho D3 U12 South | 2.58 | 1.80 |
| 17-04-15 | Sun Valley Blue B05 | 0 | Idaho Rush Black B05 | 0 | 2016 Spr Idaho D3 U12 South | 1.79 | 1.23 |
| 17-04-13 | Idaho Rush Black B05 | 6 | Nampa City FC B05 | 0 | 2016 Spr Idaho D3 U12 South | 4.74 | 0.79 |
| 17-04-06 | Idaho Rush Black B05 | 6 | FC Nova Red B05 | 4 | 2016 Spr Idaho D3 U12 South | 3.99 | 2.47 |
| 17-04-01 | Idaho Rush Black B05 | 2 | Boise Nationals Timbers Green B05 | 1 | 2016 Spr Idaho D3 U12 South | 2.67 | 1.34 |
| 17-03-11 | MSC Newman B05 | 0 | Idaho Rush Black B05 | 6 | 2016 Spr Idaho D3 U12 South | 1.18 | 3.69 |
| 17-03-04 | Idaho Rush Black B05 | 3 | Mountain Home SC B05 | 1 | 2016 Spr Idaho D3 U12 South | 3.55 | 1.96 |
| 16-11-06 | Idaho Rush White B05 | 0 | Idaho Rush Black B05 | 0 | 2016 FC Nova Fall Showcase U12 | 1.64 | 1.64 |
| 16-11-05 | Idaho Rush Black B05 | 0 | FC Nova Gold JP B05 | 3 | 2016 FC Nova Fall Showcase U12 | 1.47 | 3.51 |
| 16-11-05 | Idaho Rush Black B05 | 0 | FC Nova Gold TB B05 | 2 | 2016 FC Nova Fall Showcase U12 | 1.58 | 3.99 |
| 16-10-15 | Boise Nationals Timbers Green B05 | 1 | Idaho Rush Black B05 | 3 | 2016 Idaho D3 U12 West U12 | 1.34 | 2.67 |
| 16-10-09 | Idaho Rush Black B05 | 4 | Mountain Home SC B05 | 1 | 2016 GEM State Challenge U12B Silver Wes | 3.55 | 1.96 |
| 16-10-08 | Canyon Optimist Inferno B05 | 5 | Idaho Rush Black B05 | 2 | 2016 GEM State Challenge U12B Silver Wes | 3.36 | 1.29 |
| 16-10-08 | Jackson Hole United Black B05 | 2 | Idaho Rush Black B05 | 1 | 2016 GEM State Challenge U12B Silver Wes | 1.09 | 1.83 |
| 16-10-07 | Boise Nationals Timbers Green B05 | 0 | Idaho Rush Black B05 | 2 | 2016 GEM State Challenge U12B Silver Wes | 1.34 | 2.67 |
| 16-10-01 | Real Middleton Juventus B05 | 4 | Idaho Rush Black B05 | 1 | 2016 Idaho D3 U12 West U12 | 2.63 | 2.08 |
| 16-09-17 | Idaho Rush Black B05 | 5 | Nampa City FC B05 | 1 | 2016 Idaho D3 U12 West U12 | 4.74 | 0.79 |
| 16-09-10 | Idaho Arsenal United B05 | 4 | Idaho Rush Black B05 | 0 | 2016 Idaho D3 U12 West U12 | 2.58 | 1.80 |
| 16-08-27 | Idaho Rush Black B05 | 7 | Mountain Home SC B05 | 1 | 2016 Idaho D3 U12 West U12 | 3.55 | 1.96 |